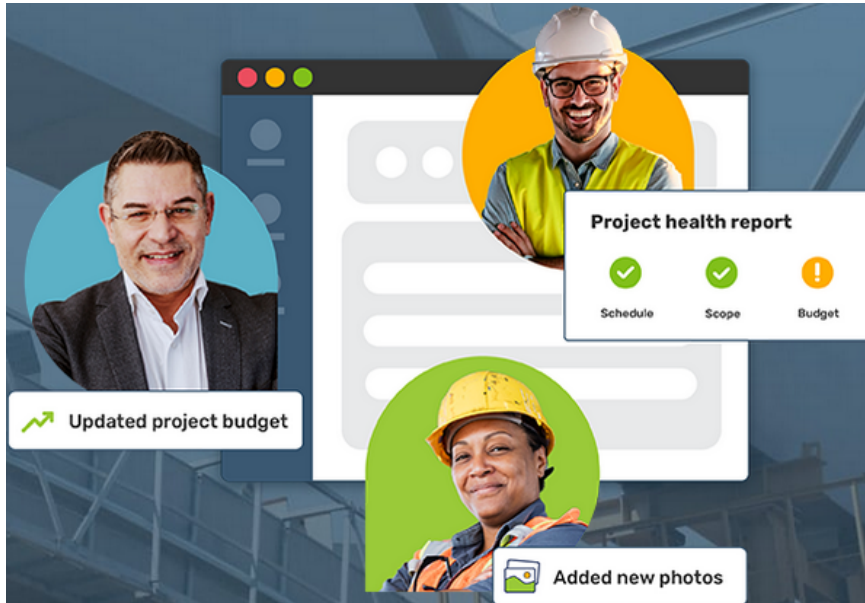


# ProjectTeam.com Launches Dedicated AI Division to Advance Construction Management Technology

May 8, 2026



**ProjectTeam.com has launched a dedicated artificial intelligence and machine learning software development team as part of a wider strategy to expand AI driven capabilities across its construction management platform.**

The new division will be led by newly appointed Principal AI Engineer Yuriy Myshkevych and will focus on developing predictive analytics, project intelligence and productivity tools for construction professionals.

The company said the investment reflects growing demand for technology that can help project teams identify risks earlier, improve decision making and streamline day to day operations across complex construction programmes.

Ty Witmer, President of ProjectTeam, said the construction sector is entering a pivotal stage in technology adoption.

“The construction industry is at an inflection point, and the organisations that harness and apply AI and machine learning thoughtfully will define the next decade of project delivery,” he said.

“Yuriy is exactly the kind of leader we need to guide this work. His vision for applied AI, paired with our deep understanding of how construction management teams actually operate, will translate directly into a smarter, faster and more predictive platform for our customers.”

Under Myshkevych's leadership, the team will develop a multi track roadmap focused specifically on construction industry requirements.

One area of focus will be predictive analytics powered by machine learning, using existing project data to forecast schedule performance, cost pressures and potential risk outcomes.

The company also plans to expand programme and project intelligence capabilities, helping construction leaders identify portfolio wide trends, benchmark project performance and detect early warning signs before issues escalate.

Alongside this, AI powered productivity tools will be integrated into everyday workflows including field management, document control, RFIs, submittals, change management and reporting. The aim is to reduce manual administration and speed up operational decision making.

Myshkevych said the construction sector is increasingly well positioned to benefit from AI due to the volume of structured project data now available.

"ProjectTeam.com sits on top of an extraordinary depth of structured construction data, and that's the foundation every meaningful AI and machine learning capability is built on," he said.

"I'm energised to be joining this team at a moment when the technology is finally catching up to the ambitions of the construction industry.

"Our goal is straightforward: deliver AI in construction management that earns its place in our customers' workflows by making their projects more predictable, their teams more productive and their decisions better informed."

ProjectTeam.com said the new division is actively recruiting across machine learning, applied AI and data engineering roles as it scales the initiative.