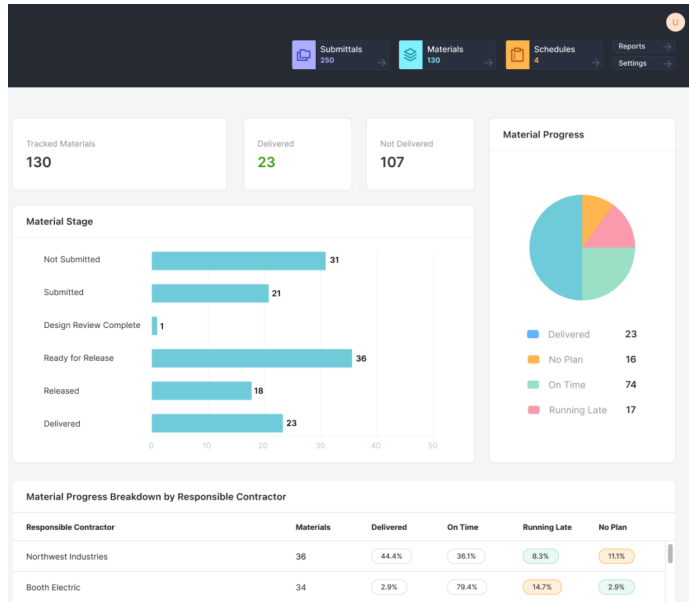


# DPR Construction Scales AI Procurement Platform Across 100+ Projects

April 3, 2026



**ConstructivIQ has announced that DPR Construction has expanded its use of the firm’s AI-driven procurement planning platform to more than 100 projects, marking a significant shift from pilot deployment to enterprise-wide adoption.**

The rollout follows an enterprise agreement signed in early 2025 and includes some of the world’s largest and most complex data centre programmes. The move highlights growing demand for more structured, data-driven approaches to procurement in construction, particularly as supply chain pressures and project complexity continue to increase.

## From project-level tracking to enterprise intelligence

Traditionally, procurement in construction has been managed at the project level, often leading to fragmented data and reactive decision-making. By scaling ConstructivIQ across its portfolio, DPR is aiming to move towards a more integrated, enterprise-wide model.

The platform supports procurement planning across a range of scenarios, from standard materials to long-lead equipment, while integrating with tools such as Autodesk Build, Oracle P6, Procore, and Microsoft Project. This enables alignment between procurement workflows and construction schedules, providing a more complete view of the delivery lifecycle.

Atul Khanzode, Chief Technology Officer at DPR Construction, said:

“ConstructivIQ is helping us transform how we think about procurement, from managing individual projects to building enterprise-wide supply chain intelligence. The platform’s AI capabilities have enabled our

project teams to move from reactive to proactive planning, improving both team efficiency and reducing schedule risk across our portfolio.”

### **Improving visibility and reducing risk**

With more than 100 projects now live on the platform, DPR is beginning to establish consistent metrics for material management and procurement performance. This includes enhanced coordination with trade partners, improved submittal tracking, and greater visibility into equipment lead times and potential schedule impacts.

The data generated is also being used to inform internal supply chain teams, enabling them to provide earlier guidance on risks, alternative materials, and scheduling constraints.

This reflects a broader industry shift, where procurement is increasingly viewed as a core project control discipline rather than a supporting function.

### **Scaling procurement as a core project capability**

For ConstructivIQ, the deployment represents a validation of its platform at enterprise scale, particularly with a contractor known for delivering technically complex projects.

Sadanand Sahasrabudhe, CEO of ConstructivIQ, said:

“Scaling from pilot projects to enterprise deployment with a sophisticated builder like DPR validates ConstructivIQ’s ability to meet the standards of the industry’s most advanced general contractors. We’re seeing strong market momentum as more general contractors recognize that procurement planning requires the same systematic, enterprise-wide approach as other critical project controls. DPR’s success demonstrates that sophisticated procurement management can scale while delivering measurable improvements in team productivity and risk mitigation.”

### **A shift in how construction manages supply chains**

As projects become larger and more interconnected, the ability to manage procurement proactively is becoming critical to maintaining programme certainty.

DPR’s rollout signals a move towards treating procurement data as a strategic asset—one that can be leveraged across projects to improve forecasting, reduce delays, and strengthen decision-making.

For the wider industry, it points to a clear direction of travel: procurement is no longer just about sourcing materials, but about integrating supply chain intelligence into the core of project delivery.