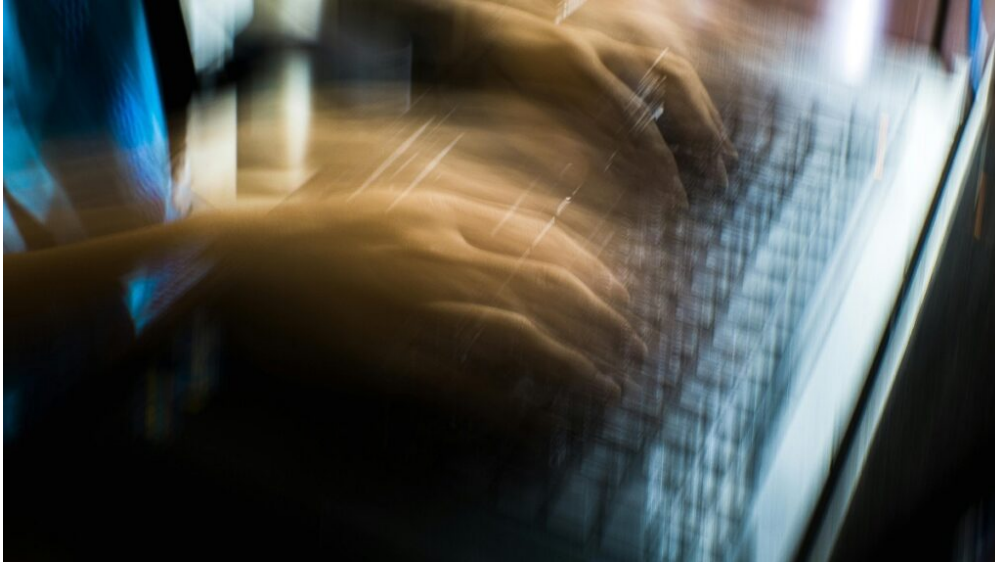


Career Compass: Keeping Control When Projects Move Faster Than Expected

April 28, 2026



Project managers are often trained to recover slipping timelines, manage delays and bring structure to slow-moving delivery. But what happens when the opposite occurs? When decisions accelerate, stakeholders push for rapid progress and delivery starts moving faster than the systems designed to support it?

In 2026, this is becoming more common. With leaner teams, real-time communication and increased pressure to deliver quickly, projects can gain pace rapidly. While this may seem positive, **uncontrolled speed carries its own risks**. The challenge for project managers is not just enabling momentum, but maintaining control while it builds.

Why Fast-Moving Projects Become Risky

Acceleration often bypasses the usual checkpoints. Decisions are made quickly, sometimes without full alignment. Documentation lags behind. Teams move ahead based on partial information.

At first, this feels productive. Progress is visible, and stakeholders are engaged. But without structure, gaps begin to appear: misaligned expectations, overlooked dependencies and assumptions that go untested.

Speed without control doesn't remove risk — it compresses it.

Recognise When Pace Is Outrunning Structure

One of the earliest signs of trouble is when the project's rhythm changes. Meetings become reactive, updates feel incomplete, and decisions are made before implications are fully understood.

Another signal is when teams begin asking more clarifying questions after work has already started. This often indicates that direction has not kept pace with delivery.

Recognising these signs early allows you to stabilise before issues escalate.

Reinforce the Basics, Don't Reinvent the Process

When projects accelerate, the instinct can be to introduce new controls. In reality, the priority is to **reinforce the fundamentals**:

- Clear ownership of tasks
- Up-to-date priorities
- Visible risks and dependencies
- Consistent communication

These basics create stability without slowing momentum.

Slow Decisions, Not Progress

Not everything needs to move at the same speed. One of the most effective techniques is to separate execution from decision-making. Let teams continue progressing where clarity exists, but pause or structure decisions that carry higher risk.

This ensures that speed is applied where it is safe, and control is applied where it is needed.

Make Assumptions Explicit

Fast-moving environments rely heavily on assumptions. The risk is not that assumptions exist, but that they remain hidden.

Capture them clearly. What are teams assuming about timelines, inputs or outcomes? Bringing these into the open allows them to be tested before they become issues.

Increase Communication Precision

When pace increases, communication must become sharper, not louder. Long updates and broad messaging often create more confusion. Instead, focus on clarity:

- What has changed
- What matters now
- What needs attention

Short, precise updates help everyone stay aligned without slowing the project down.

Stay Calm While Others Speed Up

Acceleration often creates pressure. Stakeholders may push for faster answers, quicker commitments or immediate decisions. The project manager's role is to remain composed and deliberate.

Calm authority signals control. It reassures stakeholders that speed is being managed, not simply followed.

Protect Long-Term Outcomes

Fast delivery can sometimes prioritise immediate progress over sustainable outcomes. Shortcuts, if left unchecked, can create rework later.

Part of maintaining control is knowing when to challenge speed in favour of quality, alignment or risk reduction. This is where professional judgement becomes critical.

Career Compass Takeaway

Fast-moving projects are not easier to manage — they are simply different. Without structure, speed becomes risk. By reinforcing fundamentals, separating decisions from execution and communicating with precision, project managers can maintain control while preserving momentum. In 2026, the ability to manage acceleration effectively is emerging as a defining leadership skill.