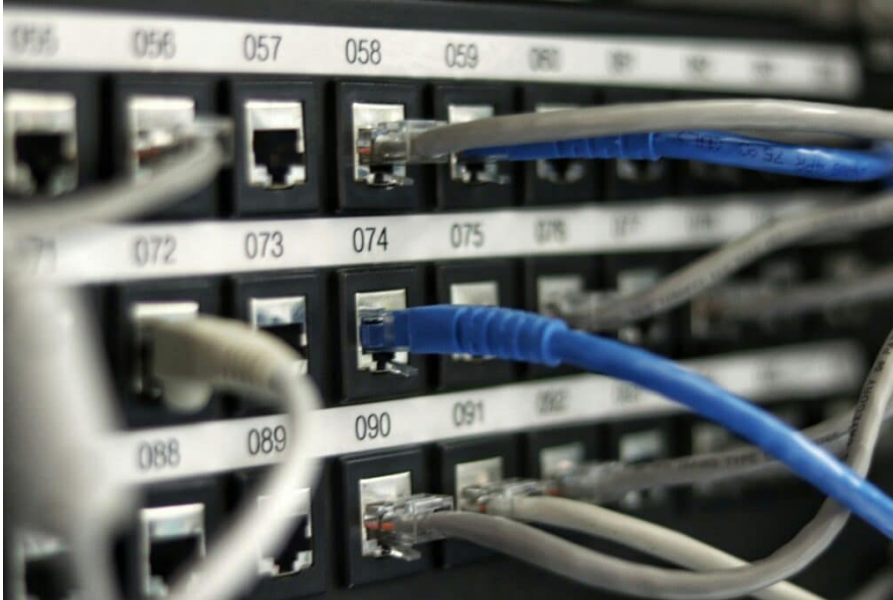


JLL bolsters Data Center and Project Management expertise with SKAE acquisition

May 16, 2024



JLL has announced the strategic acquisition of SKAE Power Solutions (SKAE), a New York-based provider of technical and project management services for data centers. This move strengthens JLL’s data center capabilities and positions them to better serve clients in this rapidly growing market.

The acquisition comes amidst surging data center demand fueled by advancements in artificial intelligence and machine learning. JLL’s Global Data Center Outlook predicts data creation to double within the next five years, necessitating significant data storage capacity expansion.

“As we help clients navigate evolving real estate needs driven by the rise in data center demand, we welcome the SKAE team and are excited to enhance our delivery of technical services for our clients’ critical assets,” said Neil Murray, CEO of Work Dynamics, JLL. “With the continued growth of the global data center market, we’re seeing increased opportunity to deliver the specialized expertise required to manage and maintain these assets. This acquisition immediately enhances our ability to expertly support our clients’ data center solutions now, and into the future.”

SKAE brings a wealth of experience in planning, engineering, installation, testing, maintenance, and operations for data centers. This expertise will significantly enhance JLL’s ability to support clients across crucial stages, including:

- Site selection
- Design

- Testing and commissioning
- Upgrades
- Operations management

Founded in 1998, SKAE boasts a team of 75 skilled professionals led by Peter Skae. They will join JLL's Work Dynamics division, forming a dedicated Technical Services unit within the Data Center vertical. SKAE will continue to operate under its own brand – "SKAE, a JLL company."

"SKAE will be key in scaling JLL's capacity to meet clients' needs and accelerating our abilities in data center management," said Sanjay Rishi, Americas CEO of Work Dynamics, JLL. "Combining SKAE's regional expertise and talent with JLL's global, comprehensive suite of solutions will both complement and expand our technical services capabilities."

"We were immediately drawn to the values upheld throughout JLL's global organization, and how closely they reflect our principles at SKAE – particularly JLL's safety-driven culture, and focus on people, procedures, and policies," said Peter Skae, Principal, SKAE. "We are looking forward to joining the organization to bring our data center solutions expertise to JLL's clients."

Layer 7 Capital served as SKAE Power Solutions' financial advisor for this transaction.

JLL's acquisition of SKAE signifies a strategic move to address the growing data center market. By combining expertise and resources, JLL positions itself as a leader in providing comprehensive data center solutions across the entire lifecycle.